



PROPRIETARY NOTE
THIS SPECIFICATION IS THE PROPERTY OF BOE DT AND SHALL NOT BE REPRODUCED OR COPIED WITHOUT THE WRITTEN PERMISSION OF BOE DT AND MUST BE RETURNED TO BOE DT UPON ITS REQUEST

TITLE:

HV320FHB-N02 Product Specification

BEIJING BOE DISPLAY TECHNOLOGY

SPEC. NUMBER
S8-63-8A-016

PRODUCT GROUP
TFT LCD

REV.
B

ISSUE DATE
2016.12.27

PAGE
1 of 23

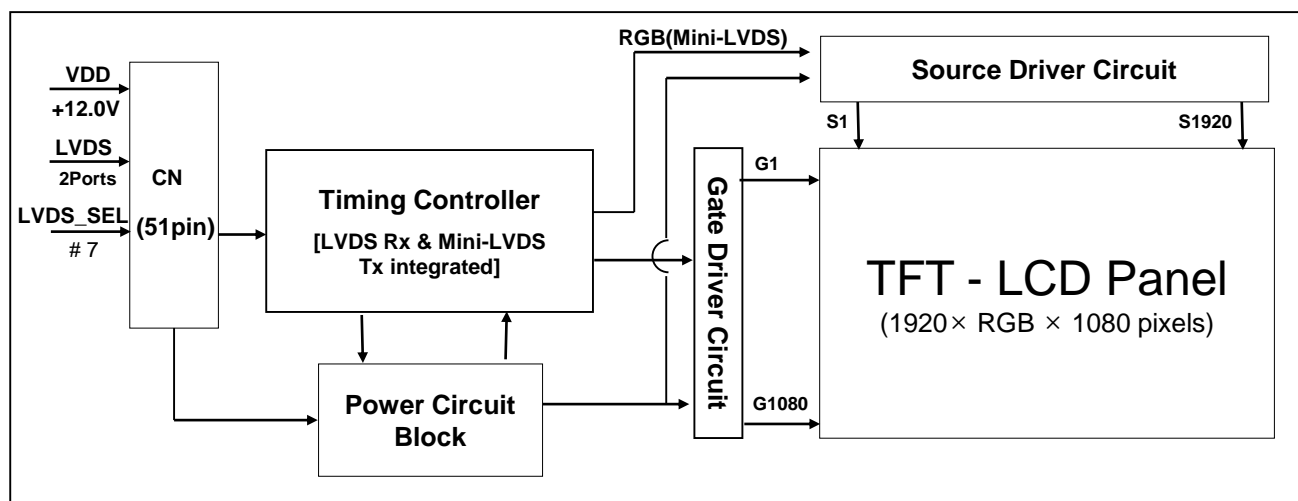
Contents

No	ITEM	Page
	REVISIONS HISTORY	2
	CONTENTS	3
1	GENERAL DESCRIPTION	4
	1.1 Introduction	
	1.2 Features	
	1.3 Applications	
	1.4 General Specification	
2	ABSOLUTE MAXIMUM RATINGS	6
3	ELECTRICAL SPECIFICATIONS	7
	3.1 TFT LCD Open Cell	
4	INTERFACE CONNECTION	8
	4.1 Open Cell Input Signal & Power	
	4.2 LVDS Interface	
5	SIGNAL TIMING SPECIFICATIONS	10
	5.1 Timing Parameters	
	5.2 Signal Timing Waveform	
	5.3 Input Signals, Basic Display Colors & Cray Scale Of Colors	
	5.4 Power Sequence	
6	MINI-LVDS SIGNAL SPECIFICATIONS	14
7	OPTICAL SPECIFICATIONS	15
8	MECHANICAL CHARACTERISTICS	17
9	RELIABILITY TEST CONDITION	18
10	PRODUCT SERIAL NUMBER	19
11	PACKING INFORMATION	20
12	HANDING & CAUTIONS	22
13	APPENDIX	23

1.0 GENERAL DESCRIPTION

1.1 Introduction

HV320FHB-N02 is a color active matrix TFT LCD open cell using amorphous silicon TFT's (Thin Film Transistors) as an active switching devices. This open cell has a 31.51 inch diagonally measured active area with FHD resolutions (1920 horizontal by 1080 vertical pixel array). Each pixel is divided into RED, GREEN, BLUE dots which are arranged in vertical stripe and this open cell can display 16.7M colors. The TFT-LCD panel used for this open cell is adapted for a low reflection and higher color type.



1.2 Features

- LVDS interface with 2 pixel / clock
- High-speed response
- Low color shift image quality
- 8-bit color depth, display 16.7M colors
- High luminance and contrast ratio, low reflection and wide viewing angle
- DE (Data Enable) only mode
- ADSDS technology is applied for high display quality
- RoHS compliant

1.3 Application

- Home Alone Multimedia TFT-LCD TV
- Display Terminals for Control System
- High Definition TV(FHD TV)
- AV application Products

1.4 General Specification

< Table 1. General Specifications >

Parameter	Specification	Unit	Remark
Active area	698.4(H) × 392.85 (V)	mm	
Number of pixels	1920(H) × 1080(V)	pixels	
Pixel pitch	121.25(H) × RGB × 363.75(V)	μm	
Pixel arrangement	Pixels RGB Vertical stripe		
Display colors	16.7M(8bits-true)	colors	
Display mode	Transmission mode, Normally Black		
Open Cell Transmittance	5.0 (typ.)	%	At center point with BOE BLU
Weight	850	gram	
Power Consumption	4.0	Watt	
Surface Treatment	Haze 1% , 3H, Anti-Glare Layer(for Front) , Clear(for Rear)		

2.0 ABSOLUTE MAXIMUM RATINGS

The followings are maximum values which, if exceed, may cause faulty operation or damage to the unit. The operational and non-operational maximum voltage and current values are listed in Table 2.

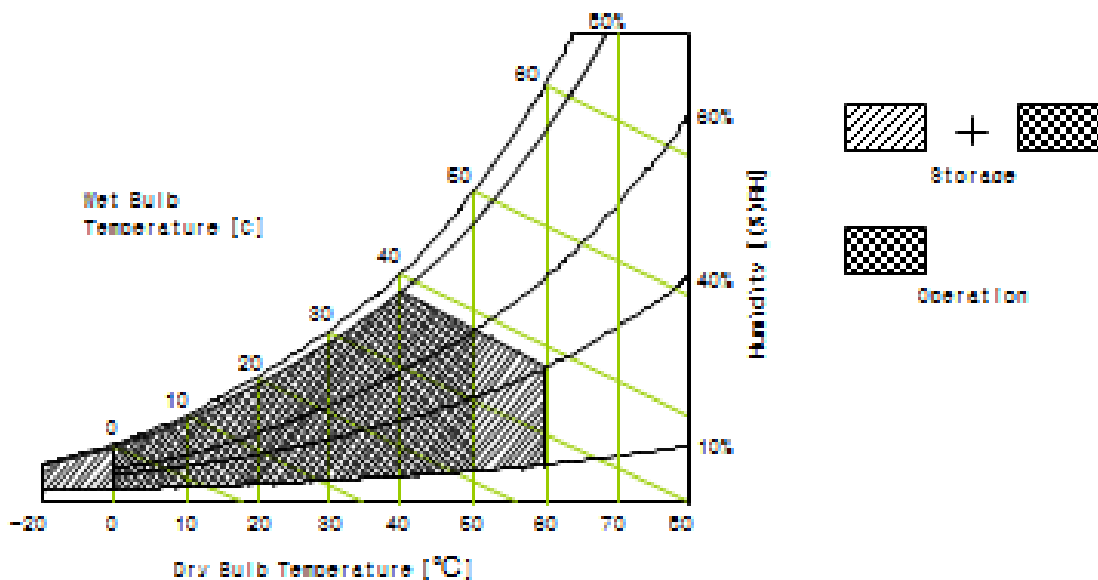
< Table 2. Open Cell Electrical Specifications >

[VSS=GND=0V]

Parameter	Symbol	Min.	Max.	Unit	Remark
Power Supply Voltage	VDD	VSS-0.3	14	V	Ta = 25 °C
Operating Temperature	T _{OP}	0	+50	°C	Note 1
	T _{SUR}	0	+60	°C	
Storage Temperature	T _{ST}	-20	+60	°C	
Operating Ambient Humidity	Hop	10	80	%RH	
Storage Humidity	Hst	10	80	%RH	

Note 1 : Temperature and relative humidity range are shown in the figure below.

Wet bulb temperature should be 39 °C max. and no condensation of water.



4.0 INTERFACE CONNECTION

4.1 Module Input Signal & Power

- Connector : IS050-C51B-C39-S (UJU) / FI-RE51S-HF-R1500 (JAE) or Equivalent.

< Table 4. Open Cell Input Connector Pin Configuration >

Pin No	Symbol	Description	Pin No	Symbol	Description
1	NC	No Connection	21	GND	Ground
2	SDA	I ² C Data	22	CH1[3]-	First pixel negative LVDS differential data input. Pair3
3	SCL	I ² C Clock	23	CH1[3]+	First pixel positive LVDS differential data input. Pair3
4	NC	Not Connected	24	NC	Not Connected
5	NC	Not Connected	25	NC	Not Connected
6	NC	Not Connected	26	NC or GND	Not Connected
7	SELLVDS	High: JEIDA Low or Open: VESA	27	NC	Not Connected
8	NC	Not Connected	28	CH2[0]-	Second pixel negative LVDS differential data input. Pair0
9	NC	Not Connected	29	CH2[0]+	Second pixel positive LVDS differential data input. Pair0
10	NC	Not Connected	30	CH2[1]-	Second pixel negative LVDS differential data input. Pair1
11	GND	Ground	31	CH2[1]+	Second pixel positive LVDS differential data input. Pair1
12	CH1[0]-	First pixel negative LVDS differential data input. Pair0	32	CH2[2]-	Second pixel negative LVDS differential data input. Pair2
13	CH1[0]+	First pixel positive LVDS differential data input. Pair0	33	CH2[2]+	Second pixel positive LVDS differential data input. Pair2
14	CH1[1]-	First pixel negative LVDS differential data input. Pair1	34	GND	Ground
15	CH1[1]+	First pixel positive LVDS differential data input. Pair1	35	CH2CLK-	Second pixel negative LVDS clock
16	CH1[2]-	First pixel negative LVDS differential data input. Pair2	36	CH2CLK+	Second pixel positive LVDS clock
17	CH1[2]+	First pixel positive LVDS differential data input. Pair2	37	GND	Ground
18	GND	Ground	38	CH2[3]-	Second pixel negative LVDS differential data input. Pair3
19	CH1CLK-	First pixel negative LVDS clock	39	CH2[3]+	Second pixel positive LVDS differential data input. Pair3
20	CH1CLK+	First pixel positive LVDS clock			

Pin No	Symbol	Description	Pin No	Symbol	Description
40	NC	Not Connected	46	GND	Ground
41	NC	Not Connected	47	NC	Not Connected
42	NC or GND	Not Connected	48	VCC	Input Voltage +12V
43	NC or GND	Not Connected	49	VCC	Input Voltage +12V
44	NC or GND	Ground	50	VCC	Input Voltage +12V
45	GND	Ground	51	VCC	Input Voltage +12V

Notes : 1. NC(Not Connected) : This pins are only used for BOE internal operations.

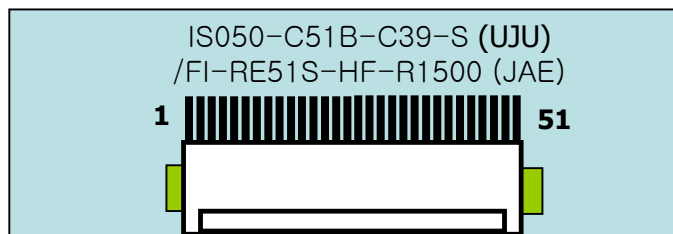
2. Input Level of LVDS signal is based on the IEA 664 Standard.

3. LVDS_SEL : This pin is used for selecting LVDS signal data format.

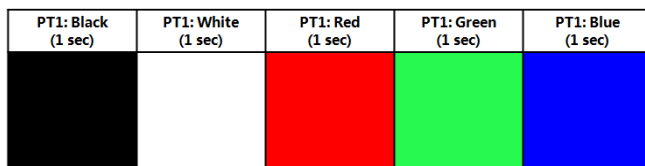
If this Pin : High (3.3V) → JEIDA LVDS format

Otherwise : Low (GND) or Open (NC) → Normal NS LVDS format

Rear view of LCM



BIST Pattern



5.0 SIGNAL TIMING SPECIFICATION

5.1 Timing Parameters (DE only mode)

< Table 5. Timing Table >

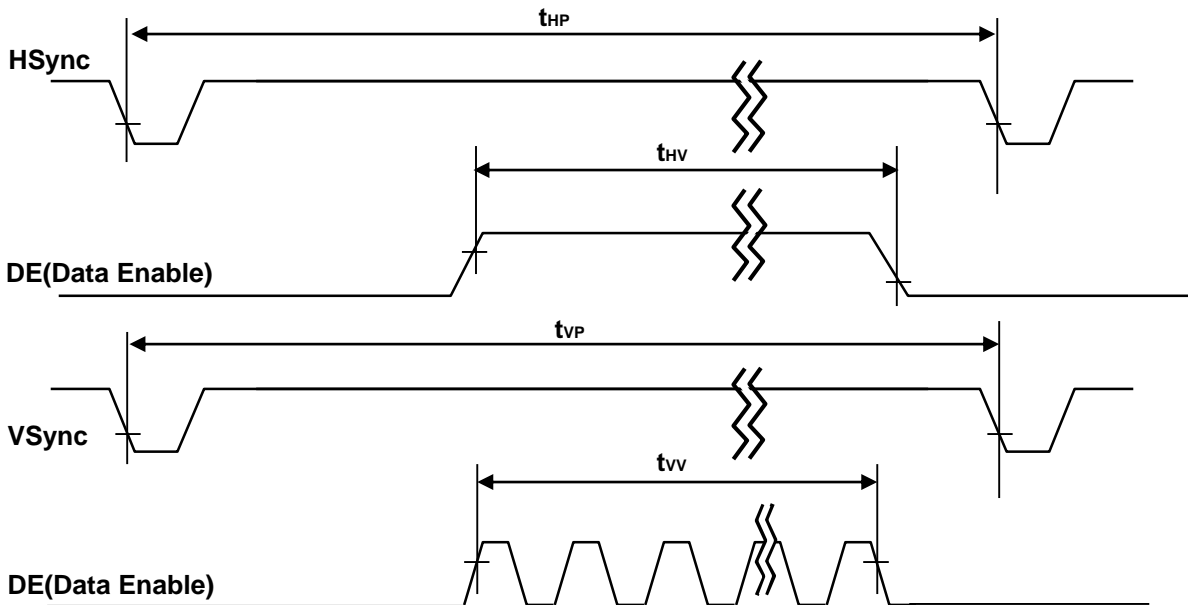
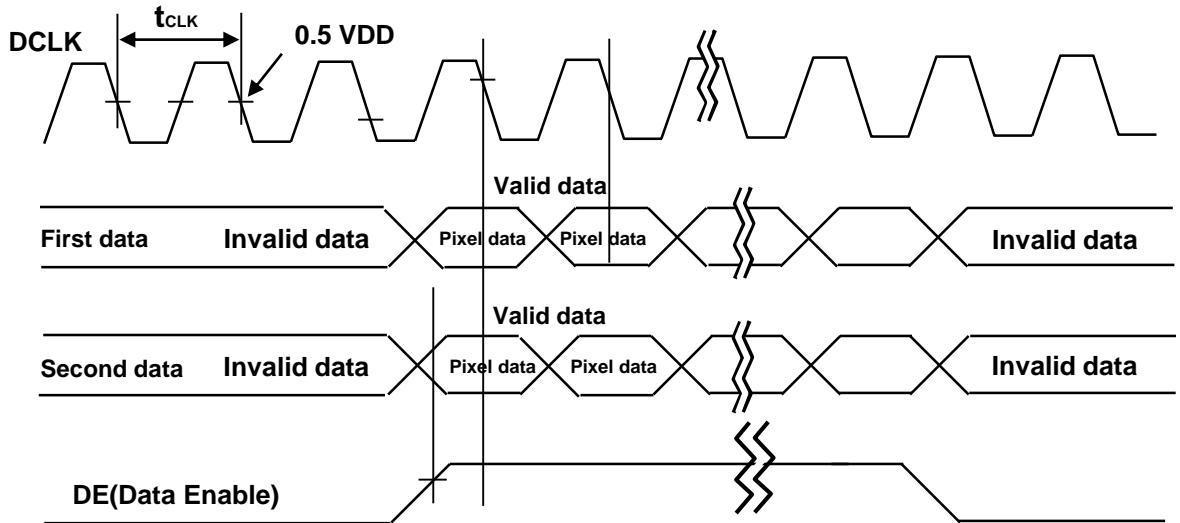
Item		Symbols		Min	Typ	Max	Unit
Clock	Frequency	1/Tc		58	74.25 (92.8)	97	MHz
	High Time	Tch		-	4/7Tc	-	
	Low Time	Tcl		-	4/7Tc	-	
Frame Period		Tv		1100	1125	1149	lines
				47	60 (75)	78	Hz
Horizontal Active Display Term		Valid	t _{HV}	-	960	-	t _{CLK}
		Total	t _{HP}	1060	1100	1200	t _{CLK}
Vertical Active Display Term		Valid	t _{VV}	-	1080	-	t _{HP}
		Total	t _{VP}	1100	1125	1149	t _{HP}

Notes: This product is DE only mode. The input of Hsync & Vsync signal does not have an effect on normal operation.

< Table 6. LVDS Input SSCG >

Symbol	Parameter	Condition	Min	Typ	Max	Unit
F	LVDS Input frequency	-	58	74.25 (92.8)	97	MHz
T _{LVSK}	LVDS channel to channel skew	F=100MHz V _{IC} =1.2V V _{ID} =±200mV	-(1/F)*30%	-	(1/F)*30%	ps
F _{LVMOD}	Modulating frequency of input clock during SSC	F=85MHz V _{IC} =1.2V V _{ID} =±200mV	0	-	200	KHz
F _{LVDEV}	Maximum deviation of input clock frequency during SSC		-3	-	+3	%
T _{CY-CY}	Cycle to Cycle jitter		-	-	50	ps

5.2 Signal Timing Waveform



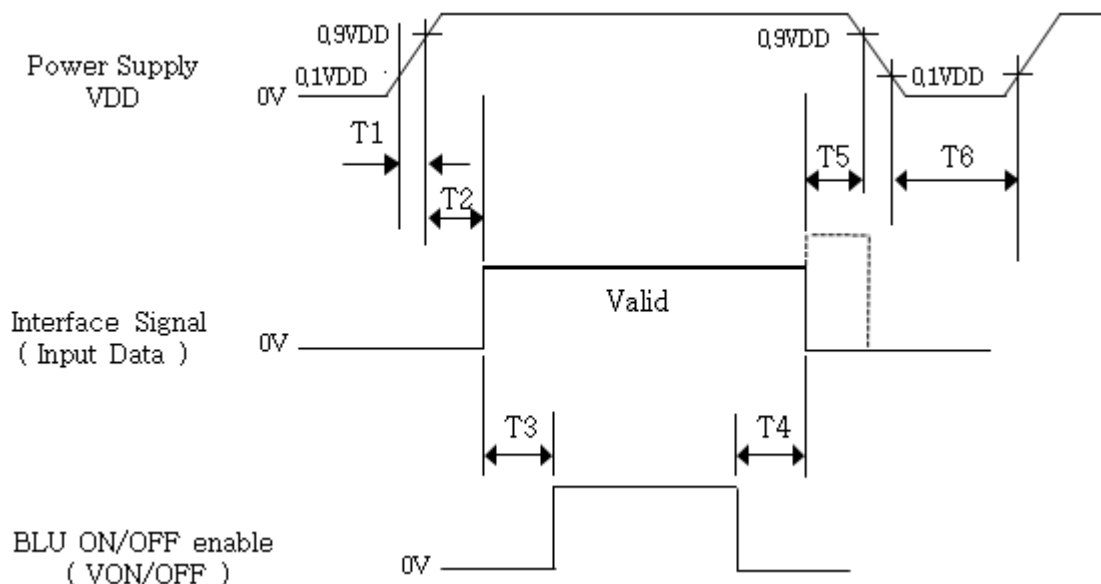
5.3 Input Signals, Basic Display Colors and Gray Scale of Colors

< Table 7. Input Signal and Display Color Table >

Color & Gray Scale		Input Data Signal																							
		Red Data								Green Data						Blue Data									
		R7	R6	R5	R4	R3	R2	R1	R0	G7	G6	G5	G4	G3	G2	G1	G0	B7	B6	B5	B4	B3	B2	B1	B0
Basic Colors	Black	0	0	0	0	0	0	0	0	0	0	0	0	0	0	0	0	0	0	0	0	0	0	0	0
	Blue	0	0	0	0	0	0	0	0	0	0	0	0	0	0	0	0	1	1	1	1	1	1	1	1
	Green	0	0	0	0	0	0	0	0	1	1	1	1	1	1	1	1	0	0	0	0	0	0	0	0
	Cyan	0	0	0	0	0	0	0	0	1	1	1	1	1	1	1	1	1	1	1	1	1	1	1	1
	Red	1	1	1	1	1	1	1	1	0	0	0	0	0	0	0	0	0	0	0	0	0	0	0	0
	Magenta	1	1	1	1	1	1	1	1	0	0	0	0	0	0	0	0	1	1	1	1	1	1	1	1
	Yellow	1	1	1	1	1	1	1	1	1	1	1	1	1	1	1	1	0	0	0	0	0	0	0	0
	White	1	1	1	1	1	1	1	1	1	1	1	1	1	1	1	1	1	1	1	1	1	1	1	1
Gray Scale of Red	Black	0	0	0	0	0	0	0	0	0	0	0	0	0	0	0	0	0	0	0	0	0	0	0	0
	△	0	0	0	0	0	0	0	1	0	0	0	0	0	0	0	0	0	0	0	0	0	0	0	0
	Darker	0	0	0	0	0	0	1	0	0	0	0	0	0	0	0	0	0	0	0	0	0	0	0	0
	△	↑								↑						↑									
	▽	↓								↓						↓									
	Brighter	1	1	1	1	1	1	0	1	0	0	0	0	0	0	0	0	0	0	0	0	0	0	0	0
	▽	1	1	1	1	1	1	1	0	0	0	0	0	0	0	0	0	0	0	0	0	0	0	0	0
	Red	1	1	1	1	1	1	1	1	0	0	0	0	0	0	0	0	0	0	0	0	0	0	0	0
Gray Scale of Green	Black	0	0	0	0	0	0	0	0	0	0	0	0	0	0	0	0	0	0	0	0	0	0	0	0
	△	0	0	0	0	0	0	0	0	0	0	0	0	0	0	0	1	0	0	0	0	0	0	0	0
	Darker	0	0	0	0	0	0	0	0	0	0	0	0	0	0	1	0	0	0	0	0	0	0	0	0
	△	↑								↑						↑									
	▽	↓								↓						↓									
	Brighter	0	0	0	0	0	0	0	0	1	1	1	1	1	1	0	1	0	0	0	0	0	0	0	0
	▽	0	0	0	0	0	0	0	0	1	1	1	1	1	1	1	0	0	0	0	0	0	0	0	0
	Green	0	0	0	0	0	0	0	0	1	1	1	1	1	1	1	1	0	0	0	0	0	0	0	0
Gray Scale of Blue	Black	0	0	0	0	0	0	0	0	0	0	0	0	0	0	0	0	0	0	0	0	0	0	0	0
	△	0	0	0	0	0	0	0	0	0	0	0	0	0	0	0	0	0	0	0	0	0	0	0	1
	Darker	0	0	0	0	0	0	0	0	0	0	0	0	0	0	0	0	0	0	0	0	0	0	1	0
	△	↑								↑						↑									
	▽	↓								↓						↓									
	Brighter	0	0	0	0	0	0	0	0	0	0	0	0	0	0	0	0	1	1	1	1	1	1	0	1
	▽	0	0	0	0	0	0	0	0	0	0	0	0	0	0	0	0	1	1	1	1	1	1	1	0
	Blue	0	0	0	0	0	0	0	0	0	0	0	0	0	0	0	0	1	1	1	1	1	1	1	1
Gray Scale of White	Black	0	0	0	0	0	0	0	0	0	0	0	0	0	0	0	0	0	0	0	0	0	0	0	0
	△	0	0	0	0	0	0	0	1	0	0	0	0	0	0	0	1	0	0	0	0	0	0	0	1
	Darker	0	0	0	0	0	0	1	0	0	0	0	0	0	0	1	0	0	0	0	0	0	0	1	0
	△	↑								↑						↑									
	▽	↓								↓						↓									
	Brighter	1	1	1	1	1	1	0	1	1	1	1	1	1	1	0	1	1	1	1	1	1	1	0	1
	▽	1	1	1	1	1	1	1	0	1	1	1	1	1	1	1	0	1	1	1	1	1	1	1	0
	White	1	1	1	1	1	1	1	1	1	1	1	1	1	1	1	1	1	1	1	1	1	1	1	1

5.4 Power Sequence

To prevent a latch-up or DC operation of the Open Cell, the power on/off sequence shall be as shown in below



< Table 8. Sequence Table >

Parameter	Values			Units
	Min	Typ	Max	
T1	0.5	-	20	ms
T2	10	-	-	ms
T3	200	-	-	ms
T4	100	-	-	ms
T5	0	-	-	ms
T6	1	-	-	s

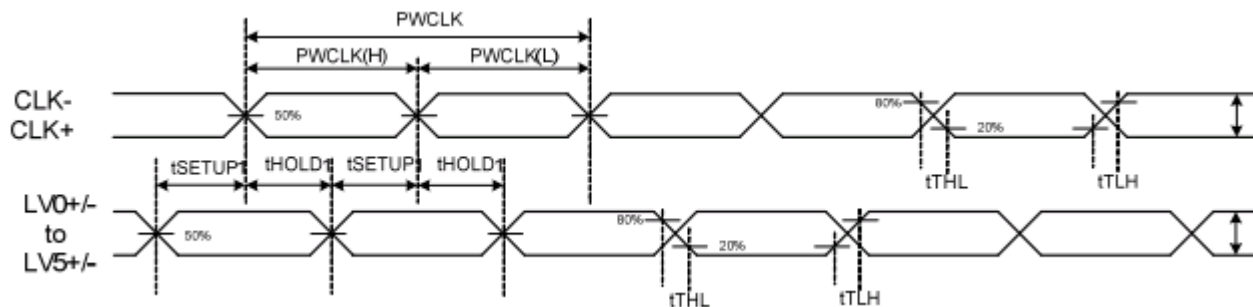
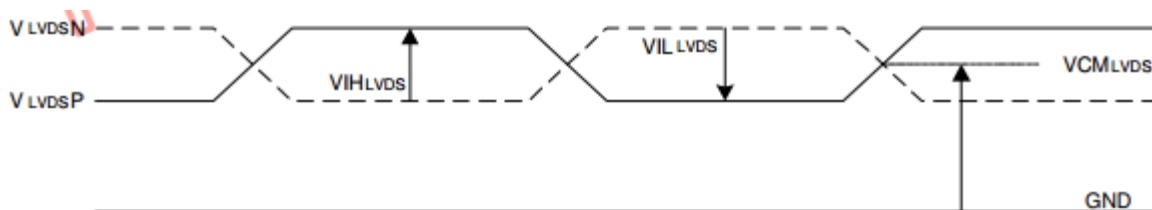
Notes: 1. Back Light must be turn on after power for logic and interface signal are valid.

2. Even though T1 is out of SPEC, it is still ok if the inrush current of VDD is below the limit.

6.0 MINI-LVDS SIGNAL SPECIFICATIONS

< Table 9. Timing Table >

Symbol	Parameter	Min	Typ	Max	Unit
F_M	Mini-LVDS Clock frequency	-	-	400	MHz
F_{MLVMOD}	Modulating frequency of input clock during SSC	-	-	600	KHz
F_{MLVDEV}	Maximum deviation of input clock frequency during SSC	-3	-	+3	%
$V_{IH_{LVDS}}$	Mini-LVDS high input voltage	200	-	-	mV
$V_{IL_{LVDS}}$	Mini-LVDS high input voltage	-	-	-200	mV
tSETUP	Data setup time	0.5	-	-	ns
tHOLD	Data hold time	0.5	-	-	ns



7.0 OPTICAL SPECIFICATIONS

The test of optical specifications shall be measured in a dark room (ambient luminance \leq 1 lux and temperature $=25\pm 2^{\circ}\text{C}$) with the equipment of Luminance meter system (Goniometer system and PR730) and test unit shall be located at an approximate distance 50cm from the LCD surface at a viewing angle of θ and Φ equal to 0° . We refer to $\theta_{\varnothing=0}$ ($=\theta_3$) as the 3 o'clock direction (the "right"), $\theta_{\varnothing=90}$ ($=\theta_{12}$) as the 12 o'clock direction ("upward"), $\theta_{\varnothing=180}$ ($=\theta_9$) as the 9 o'clock direction ("left") and $\theta_{\varnothing=270}$ ($=\theta_6$) as the 6 o'clock direction ("bottom"). While scanning θ and/or \varnothing , the center of the measuring spot on the Display surface shall stay fixed. The measurement shall be executed after 30 minutes warm-up period. VDD shall be 1.2.0V +/-10% at 25°C . Optimum viewing angle direction is 6 'clock.

< Table 10. Optical Table >

[VDD = 12.0V, Frame rate = 60Hz, Ta = $25\pm 2^{\circ}\text{C}$]

Parameter		Symbol	Condition	Min	Typ	Max	Unit	Remark
Viewing Angle	Horizontal	θ_3	CR > 10		89		Deg.	Note 1
		θ_9			89		Deg.	
	Vertical	θ_{12}			89		Deg.	
		θ_6			89		Deg.	
Contrast ratio		CR		900:1	1200:1	-		Note 2
Reproduction of color	White	W_x	$\theta = 0^{\circ}$ (Center) Normal Viewing Angle	TYP. - 0.03	0.269	TYP. + 0.03		Note 3 (With BOE BLU)
		W_y			0.271			
	Red	R_x			0.620			
		R_y			0.346			
	Green	G_x			0.318			
		G_y			0.634			
	Blue	B_x			0.154			
		B_y			0.037			
Response Time	G to G	T_g		-	8	10	ms	Note 4
Gamma Scale				2.0	2.2	2.4		
Cell Transmittance					5.0		%	Note 5

Note :

1. Viewing angle is the angle at which the contrast ratio is greater than 10. The viewing are determined for the horizontal or 3, 9 o'clock direction and the vertical or 6, 12 o'clock direction with respect to the optical axis which is normal to the LCD surface.
2. Contrast measurements shall be made at viewing angle of $\theta=0^\circ$ and at the center of the LCD surface. Luminance shall be measured with all pixels in the view field set first to white, then to the dark (black) state. (See Figure 1 shown in Appendix) Luminance Contrast Ratio (CR) is defined mathematically.

$$CR = \frac{\text{Luminance when displaying a white raster}}{\text{Luminance when displaying a black raster}}$$

3. The color chromaticity coordinates specified in Table 9 shall be calculated from the spectral data measured with all pixels first in red, green, blue and white. Measurements shall be made at the center of the panel. The BLU is used by BOE.
4. Response time T_g is the average time required for display transition by switching the input signal as below table and is based on Frame rate $f_V=60\text{Hz}$ to optimize. Each time in below table is defined as Figure 2 and shall be measured by switching the

Measured Response Time	Target																
	0	15	31	47	63	79	95	111	127	143	159	175	191	207	223	239	255
Start	0																
	15																
	31																
	47																
	63																
	79																
	95																
	111																
	127																
	143																
	159																
	175																
	191																
	207																
	223																
	239																
255																	

5. Definition of Transmittance (T%) :

Module is with white(L255) signal input

$$\text{Transmittance} = \frac{\text{Luminance of LCD Module}}{\text{Luminance of BLU}} \times 100 \%$$

8.0 MECHANICAL CHARACTERISTICS

8.1 Dimensional Requirements

Figure 3(located in Appendix) shows mechanical outlines for the model HV320FHB-N02. Other parameters are shown in Table 10.

< Table 11. Dimensional Parameters >

Parameter	Specification	Unit
Active area	698.4(H) × 392.85 (V)	mm
Pixel pitch	121.25(H) × RGB × 363.75(V)	μm
Number of pixels	1920(H) × 1080(V) (1 pixel = R + G + B dots)	pixels
Weight	850	gram

8.2 Semi-Glare and Polarizer Hardness

The surface of the LCD has an Anti-glare coating to minimize reflection and a coating to Reduce scratching.

9.0 Reliability Test Condition

< Table 12. Reliability Test Condition >

Item	Test Condition
High-Temp/STG	Ta = 60 °C, 240 hrs
Low-Temp/STG	Ta = -20 °C, 240 hrs
High-Temp/HMD	Ta = 50 °C, 80%RH, 240hrs
High-Temp/OP	Ta = 50 °C, 240hrs
Low-Temp/OP	Ta = 0 °C, 240hrs
TST	Ta = -20 °C ↔ 60 °C (0.5 hr), 100 cycle

10.0 PRODCUT SERIAL NUMBER

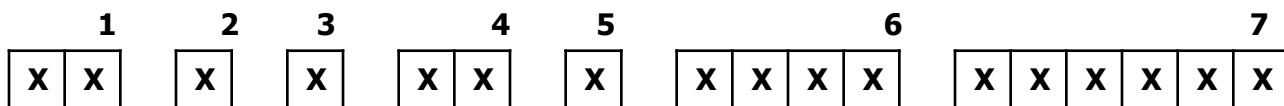


HV320FHB-N02



XXXXXXXXXXXXXXXXXXXX

MADE IN CHINA



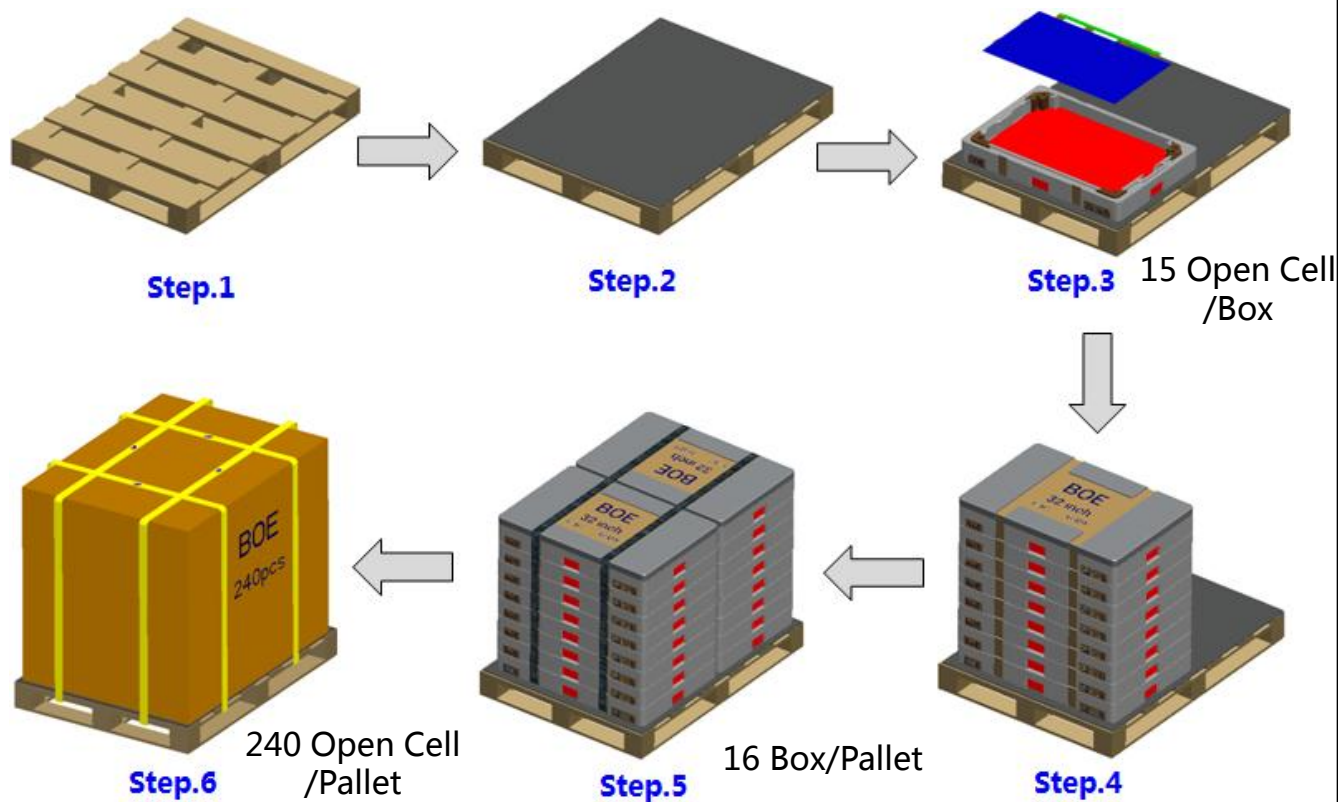
- 1. Control Number
- 2. Rank / Grade
- 3. Line Classification
- 4. Year (2011 : 11, 2012 : 12, ...)

- 5. Month (1,2,3, ... , 9, X, Y, Z)
- 6. Internal Use
- 7. Serial Number

11.0 PACKING INFORMATION

BOE provides the standard shipping container for customers, unless customer specifies their packing information. The standard packing method and Barcode information are shown in below. The packing material ESD Spec is shown in Appendix Figure 7.

11.1 Packing Order



11.2 Packing Note

Item	Size(mm)	Weight(Kg)	Remark
Box	880*605*105	-	-
Packing	1260*940*1018	-	-

11.3 Box Label

- Label Size : 110 mm (L) × 55 mm (W)

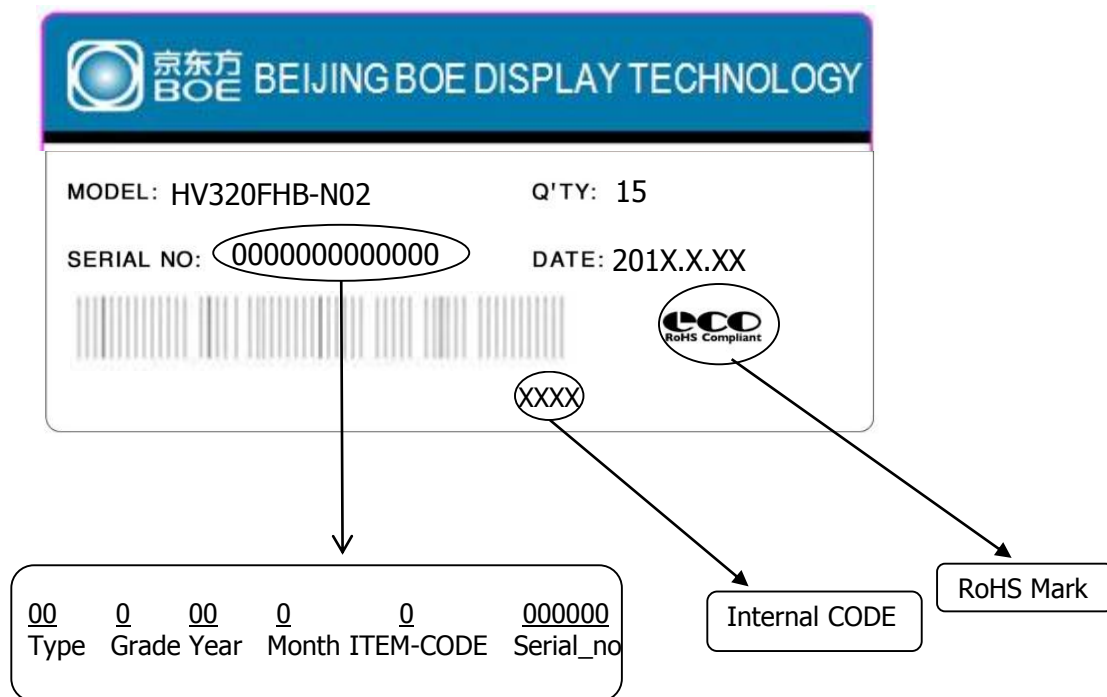
- Contents

Model : HV320FHB-N02

Q`ty : 15 Open Cell in one box.

Serial No. : Box Serial No. See next page for detail description.

Date : Packing Date



12.0 HANDLING & CAUTIONS

CAUTIONS

(1) Cautions when taking out the Panel

Pick the pouch only, when taking out panel from a shipping package.

(2) Cautions for handling the panel

As the electrostatic discharges may break the LCD Panel, handle the LCD panel with care. Peel a protection sheet off from the LCD panel surface as slowly as possible.

As the LCD panel and back -light element are made from fragile glass material, impulse and pressure to the LCD panel should be avoided.

As the surface of the polarizer is very soft and easily scratched, use a soft dry cloth without chemicals for cleaning.

Do not pull the interface connector in or out while the LCD panel is operating.

Put the panel display side down on a flat horizontal plane.

Handle connectors and cables with care.

(3) Cautions for the operation

When the panel is operating, do not lose CLK, ENAB signals. If any one of these signals is lost, the LCD panel would be damaged.

Obey the supply voltage sequence. If wrong sequence is applied, the panel would be damaged.

(4) Cautions for the atmosphere

Dew drop atmosphere should be avoided.

Do not store and/or operate the LCD panel in a high temperature and/or humidity atmosphere. Storage in an electro-conductive polymer packing pouch and under relatively low temperature atmosphere is recommended.

(5) Cautions for the panel characteristics

Do not apply fixed pattern data signal to the LCD panel at product aging.

Applying fixed pattern for a long time may cause image sticking.

(6) Other cautions

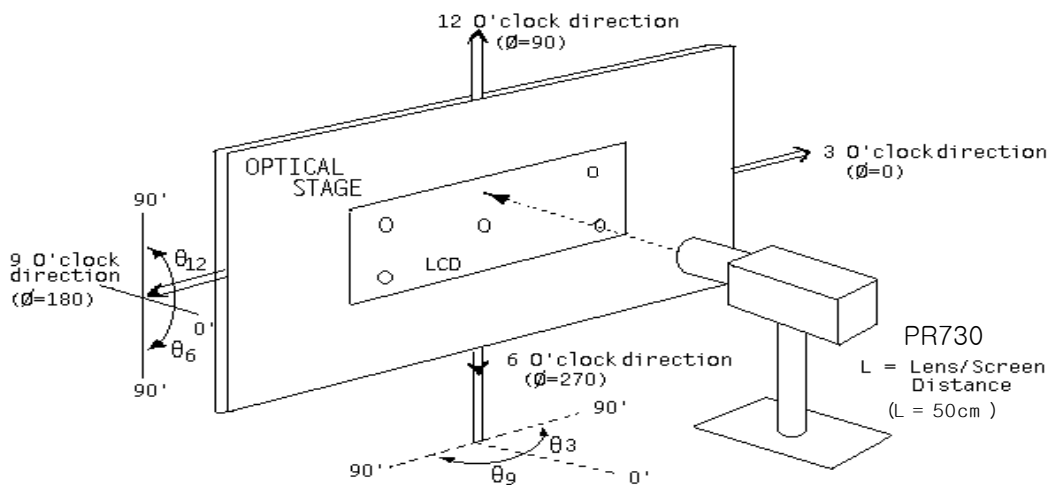
Do not disassemble and/or re-assemble LCD panel.

Do not re-adjust variable resistor or switch etc.

When returning the panel for repair or etc., Please pack the panel not to be broken. We recommend to use the original shipping packages.

13.0 APPENDIX

< Figure 1. Measurement Set Up >

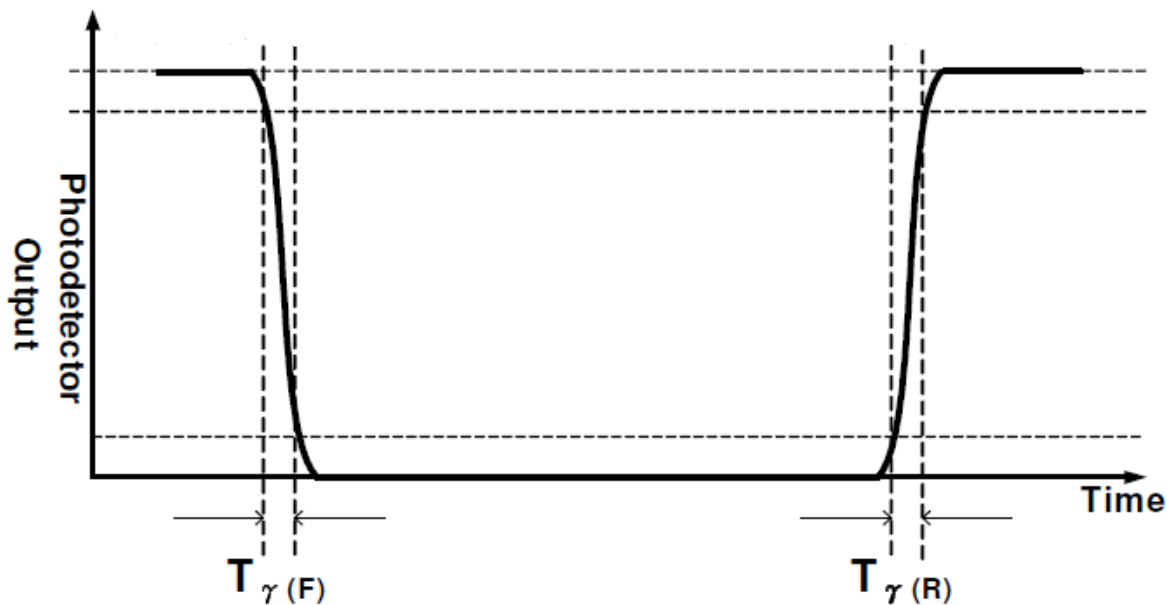


< Figure 2. Response Time Testing >

Any level of gray (Bright)

Any level of gray (Dark)

Any level of gray (Bright)



- (√) Preliminary Specification
() Final Specification

BACKLIGHT SPECIFICATION

Product's Name: [LED315E](#)
Customer's Model NO:
LD's Model NO: [LD315L06E1](#)

For Customer's Acceptance Customer's Name:	
Approved by	Comment

Approved by	Checked by	Designed by
		Chen Qihua

OBEY CO., LIMITED
www.obeycrop.com

CONTENTS

1. General Description	4
1.1 Overview	4
1.2 Available OpenCell Ass'y	4
2. BACKLIGHT Configuration	5
2.1 Factory Standard Configuration (标准配置)	5
2.1.1 BACKLIGHT Electric Parameter(背光电气参数)	5
2.1.2 BACK LIGHT Electrical Circuit (背光电路)	5
2.1.3 Backlight UNIT Connector Definition (背光接口)	5
2.1.4 BACKLIGHT Optical Characteristics (背光光学参数)	6
2.1.5 Mechanical Dimension (结构示意图)	7
3. Reliability Test	7
4. Package Specification	8
5. Mechanical Drawing	9

Record of Revision

Version NO.	Revise Date	Page	Description
0.0	2016/08/18	10	Preliminary Specification(First Draft)
0.1	2018/03/02	10	Preliminary Specification(Second Draft)

1. General Description

1.1 Overview

This specification applies to Obey Co., Limited, LD315L06E1 backlight module of the whole machine.

1.2 Available OpenCell Ass'y

No.	Manufacturer	Model	Specifications	Transmition	Remarks
1	LG	LC320EIJ-FFE2	FHD		
2	AUO	T320HVN05.6	FHD		
3	BOE	HV320WHB-N80	FHD		
4	BOE	HV320FHB-N00	FHD		
5	BOE	MV315QHB-N10	QHD		
6					
7					
8					
9					
10					
11					
12					
13					
14					
15					
16					
17					
18					
19					
20					
21					
22					
23					
24					
The above information is only for reference, please take the material as the standard.					

2.BACKLIGHT Configuration

2.1 Factory Standard Configuration (智能标准配置)

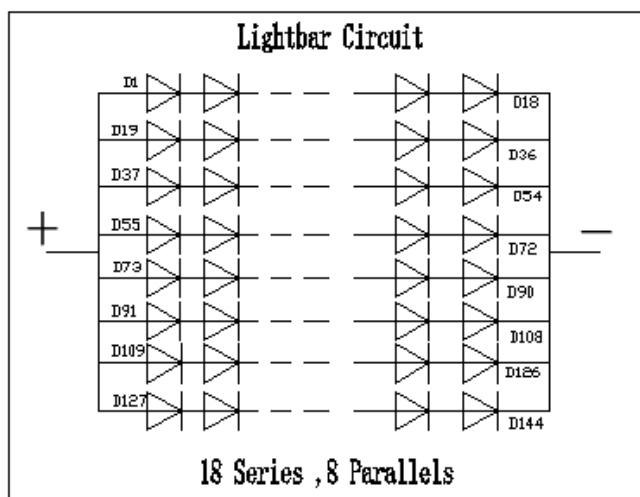
标准配置方案: 8*18 (4014 60mA) + 两扩一增

2.1.1 BACKLIGHT Electric Parameter(背光电气参数)

Parameter	Symbol	Value			Unit	Note
		Min.	Typ.	Max.		
BLU Voltage	U	55	--	65	V	
BLU Power	P		27	--	W	IL =480mA
BLU Current	I	--	480	--	mA	
BLU lifetime	T	50000			h	(1)

Note (1) The lifetime is defined as the time which luminance of the LED decays to 50% compared to the initial value, Operating condition: Continuous operating at Ta = 25±2°C, IL =480mA

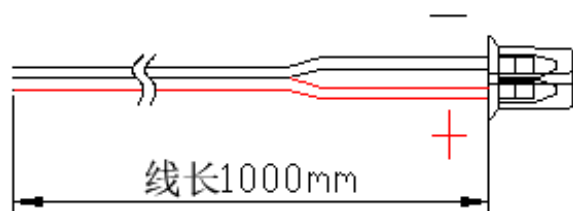
2.1.2 BACK LIGHT Electrical Circuit (背光电路)



PER LED light bar circuit is(8)Parallels (18)Series, Backlight circuit is(8)Parallels (18)Series

2.1.3 Backlight UNIT Connector Definition (背光接口)

Backlight Input connector model: PHR-2(JST) PITCH2.0mm (一路 PH2.0 2pin 插头)



2.1.4 BACKLIGHT Optical Characteristics (背光光学参数)

Item	Unit	Min.	Typ.	Max.	Unit	Test Condition
Voltage	V _f	52.2	--	61.2	V	I _f = 480mA
Current	I _r	--	480	528	mA	
Center brightness	L _v	--	6000	--	cd/m ²	I _f = 480mA
Uniformity	U	--	75	--	%	
Color Coordinates	X	0.225	0.255	0.385		I _F =480mA T _a =25°C Each chip
	Y	0.200	0.220	0.250		

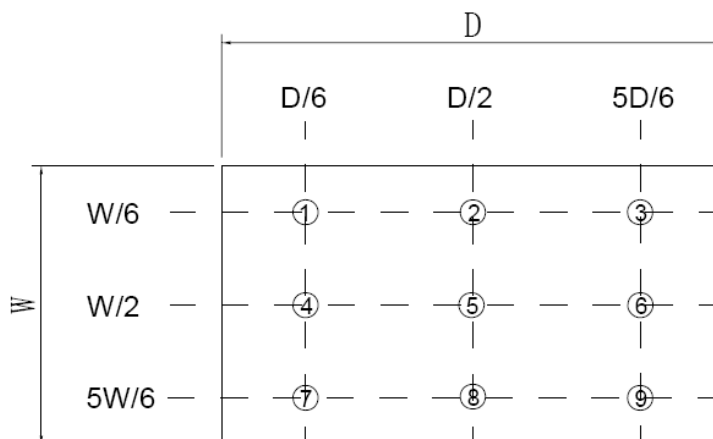
Note 1: Test Condition: 1) Time: Light after 5mins;

2) Test Environment: Dark Room (under 10Lux)

3) Luminance, color coordinate test points: see the figure below

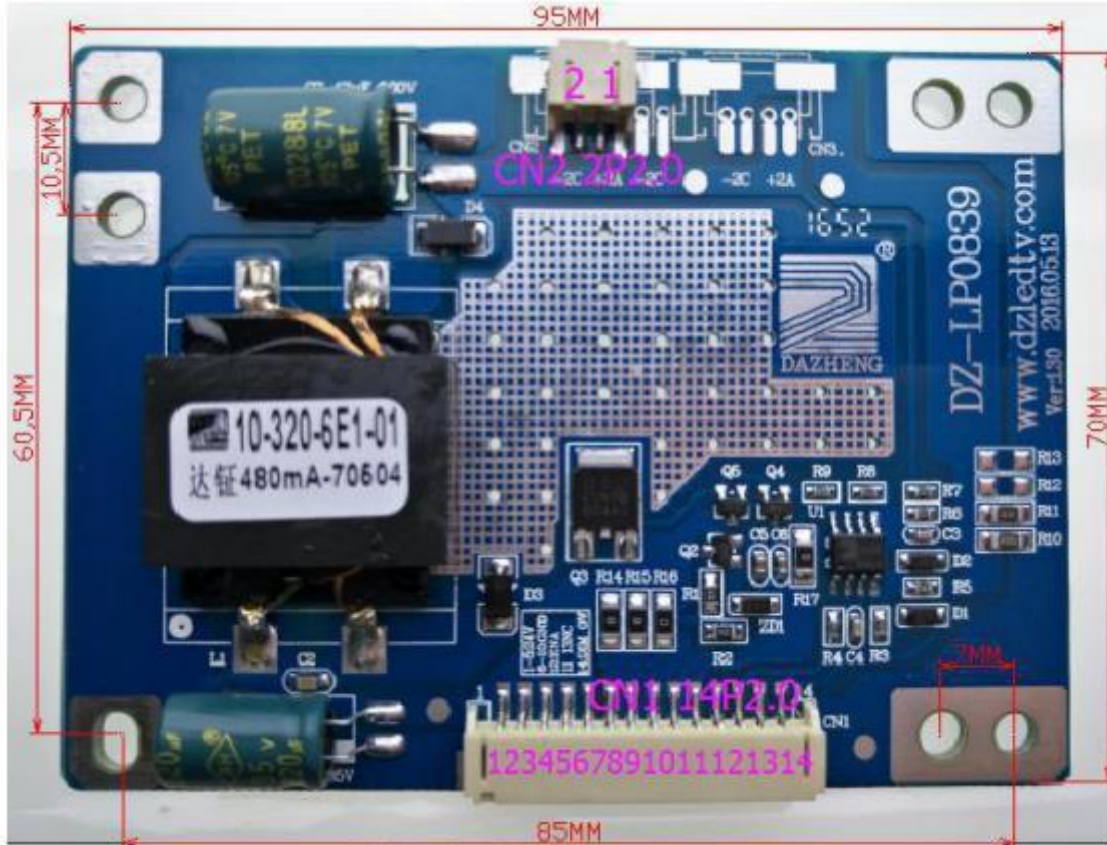
4) Optical characteristics test point diagram

Note 2: Uniformity $\Delta I = (I_{MIN} \div I_{MAX}) \times 100\%$



The above brightness and uniformity values are subject to the test of the color analysis instrument of Obey Co., Limited

2.1.5 Mechanical Dimension (结构示意图)



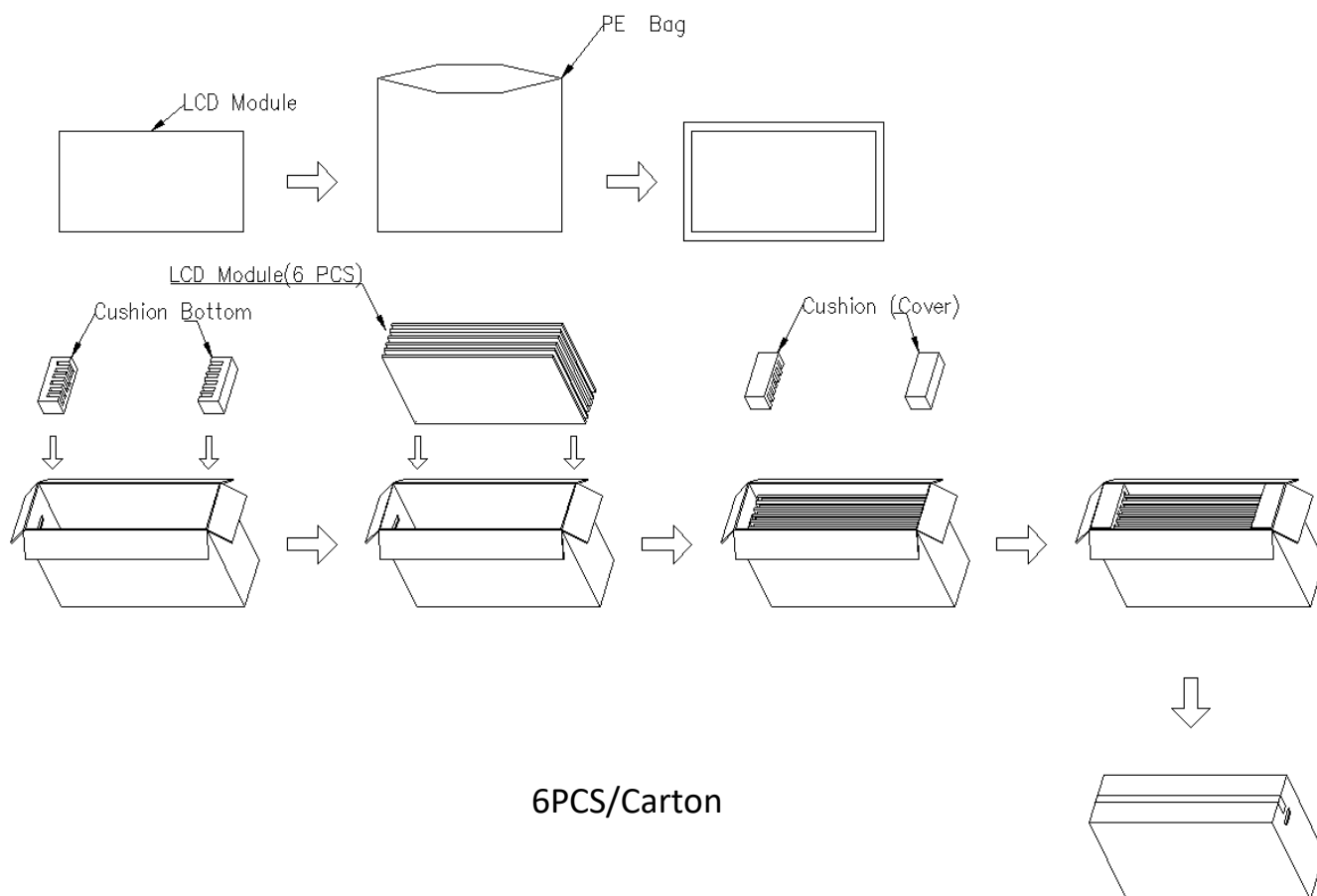
CN1 14P2.0:电源输入口
 1~5 脚为电源输入+24V
 6~10 脚为电源输入-24V (GND)
 11 脚 NC 空、13 脚为空

CN2 2P2.0:灯条输出接口
 1 脚为 LED 输出正极
 2 脚为 LED 负极

3. Reliability Test

	Test Item	Q'ty	Condition
1	High temperature storage test	3	60°C,300hrs
2	Low temperature storage test	3	-20°C,300hrs
3	High temperature operation test	3	50°C,300hrs
4	Low temperature operation test	3	-5°C,300hrs
5	Drop test (With carton)	3	Height: 50cm 1 corner, 3 edges, 6 surfaces (ASTMD4169-I)

4. Package Specification



- (√) Preliminary Specification
() Final Specification

BACKLIGHT SPECIFICATION

Product's Name: [LED315E](#)
Customer's Model NO:
LD's Model NO: [LD315L06E1](#)

For Customer's Acceptance Customer's Name:	
Approved by	Comment

Approved by	Checked by	Designed by
		Chen Qihua

OBEY CO., LIMITED
www.obeycrop.com

CONTENTS

1. General Description	4
1.1 Overview	4
1.2 Available OpenCell Ass'y	4
2. BACKLIGHT Configuration	5
2.1 Factory Standard Configuration (标准配置)	5
2.1.1 BACKLIGHT Electric Parameter(背光电气参数)	5
2.1.2 BACK LIGHT Electrical Circuit (背光电路)	5
2.1.3 Backlight UNIT Connector Definition (背光接口)	5
2.1.4 BACKLIGHT Optical Characteristics (背光光学参数)	6
2.1.5 Mechanical Dimension (结构示意图)	7
3. Reliability Test	7
4. Package Specification	8
5. Mechanical Drawing	9

Record of Revision

Version NO.	Revise Date	Page	Description
0.0	2016/08/18	10	Preliminary Specification(First Draft)
0.1	2018/03/02	10	Preliminary Specification(Second Draft)

1. General Description

1.1 Overview

This specification applies to Obey Co., Limited, LD315L06E1 backlight module of the whole machine.

1.2 Available OpenCell Ass'y

No.	Manufacturer	Model	Specifications	Transmition	Remarks
1	LG	LC320EJ-FFE2	FHD		
2	AUO	T320HVN05.6	FHD		
3	BOE	HV320WHB-N80	FHD		
4	BOE	HV320FHB-N00	FHD		
5	BOE	MV315QHB-N10	QHD		
6					
7					
8					
9					
10					
11					
12					
13					
14					
15					
16					
17					
18					
19					
20					
21					
22					
23					
24					
The above information is only for reference, please take the material as the standard.					

2.BACKLIGHT Configuration

2.1 Factory Standard Configuration (智能标准配置)

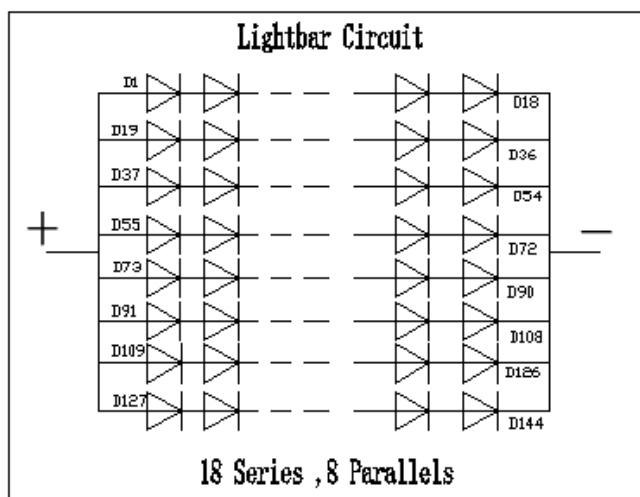
标准配置方案: 8*18 (4014 60mA) + 两扩一增

2.1.1 BACKLIGHT Electric Parameter(背光电气参数)

Parameter	Symbol	Value			Unit	Note
		Min.	Typ.	Max.		
BLU Voltage	U	55	--	65	V	
BLU Power	P		27	--	W	IL =480mA
BLU Current	I	--	480	--	mA	
BLU lifetime	T	50000			h	(1)

Note (1) The lifetime is defined as the time which luminance of the LED decays to 50% compared to the initial value, Operating condition: Continuous operating at Ta = 25±2°C, IL =480mA

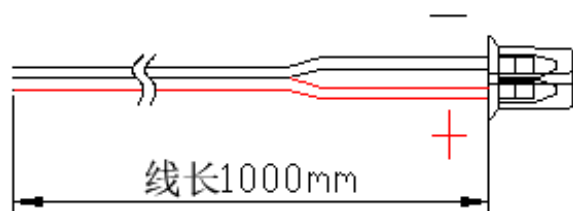
2.1.2 BACK LIGHT Electrical Circuit (背光电路)



PER LED light bar circuit is(8)Parallels (18)Series, Backlight circuit is(8)Parallels (18)Series

2.1.3 Backlight UNIT Connector Definition (背光接口)

Backlight Input connector model: PHR-2(JST) PITCH2.0mm (一路 PH2.0 2pin 插头)



2.1.4 BACKLIGHT Optical Characteristics (背光光学参数)

Item	Unit	Min.	Typ.	Max.	Unit	Test Condition
Voltage	V _f	52.2	--	61.2	V	I _f = 480mA
Current	I _r	--	480	528	mA	
Center brightness	L _v	--	6000	--	cd/m ²	I _f = 480mA
Uniformity	U	--	75	--	%	
Color Coordinates	X	0.225	0.255	0.385		I _F =480mA T _a =25°C Each chip
	Y	0.200	0.220	0.250		

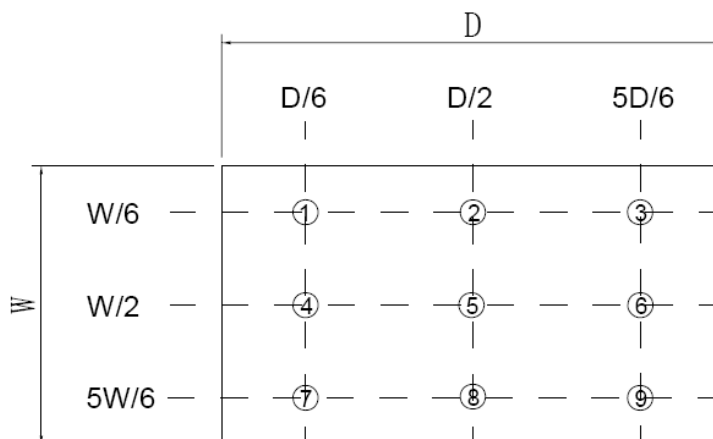
Note 1: Test Condition: 1) Time: Light after 5mins;

2) Test Environment: Dark Room (under 10Lux)

3) Luminance, color coordinate test points: see the figure below

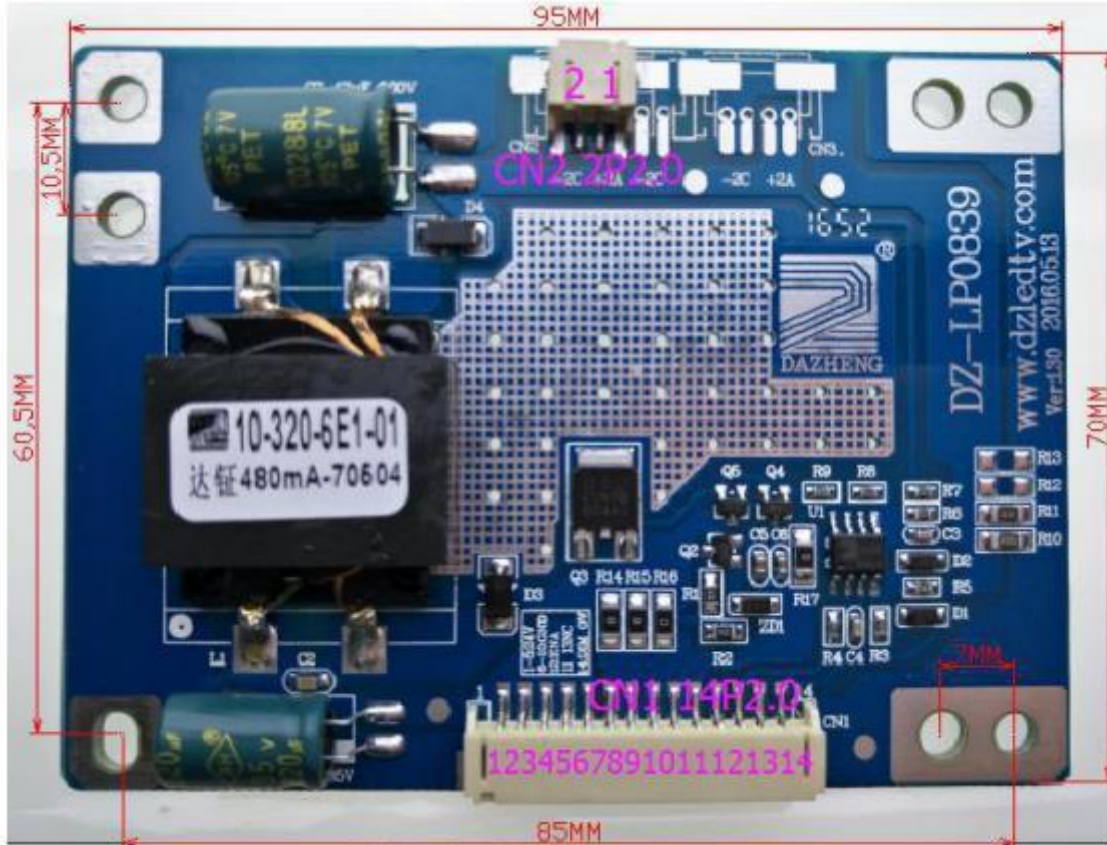
4) Optical characteristics test point diagram

Note 2: Uniformity $\Delta I = (I_{MIN} \div I_{MAX}) \times 100\%$



The above brightness and uniformity values are subject to the test of the color analysis instrument of Obey Co., Limited

2.1.5 Mechanical Dimension (结构示意图)



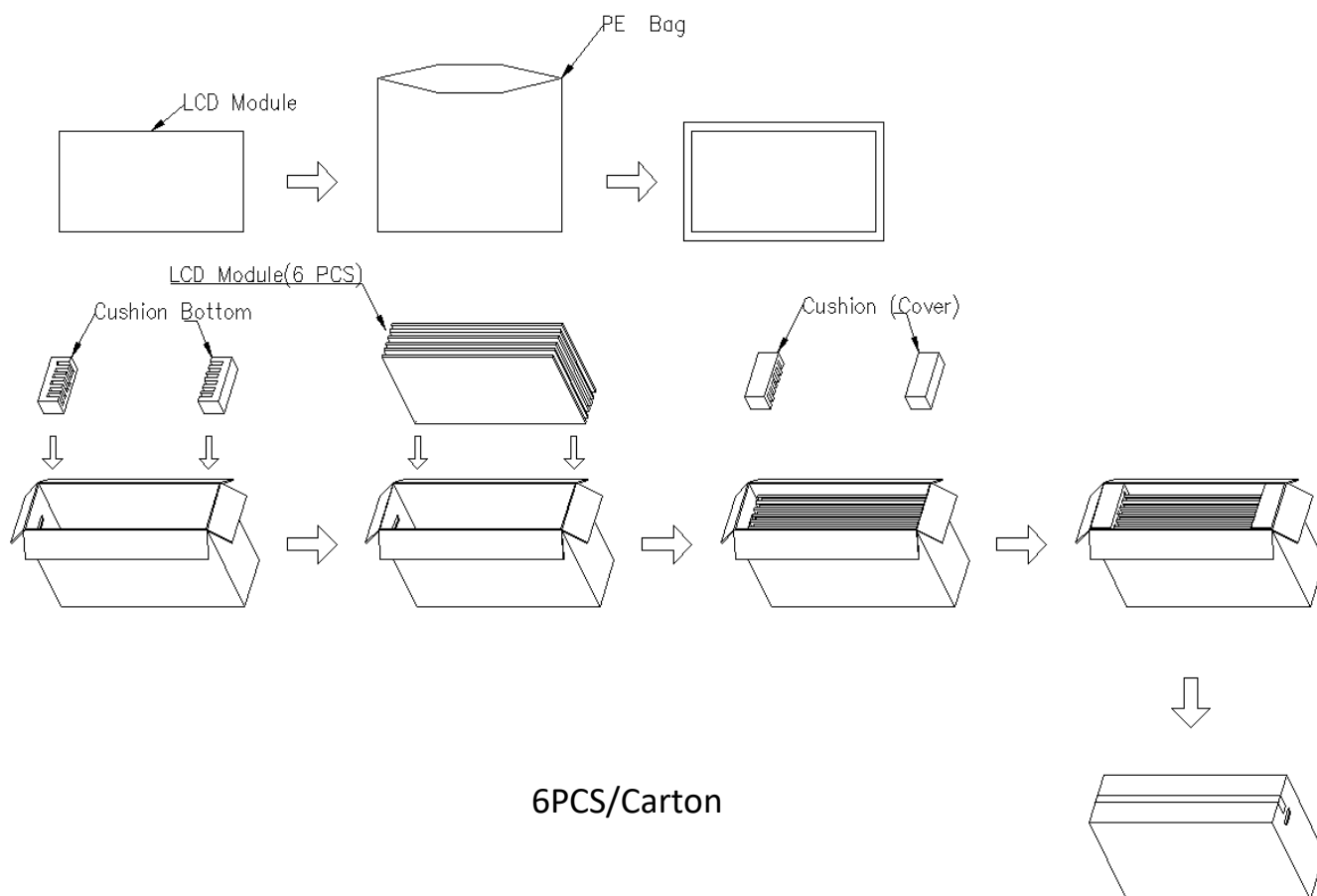
CN1 14P2.0:电源输入口
 1~5 脚为电源输入+24V
 6~10 脚为电源输入-24V (GND)
 11 脚 NC 空、13 脚为空

CN2 2P2.0:灯条输出接口
 1 脚为 LED 输出正极
 2 脚为 LED 负极

3. Reliability Test

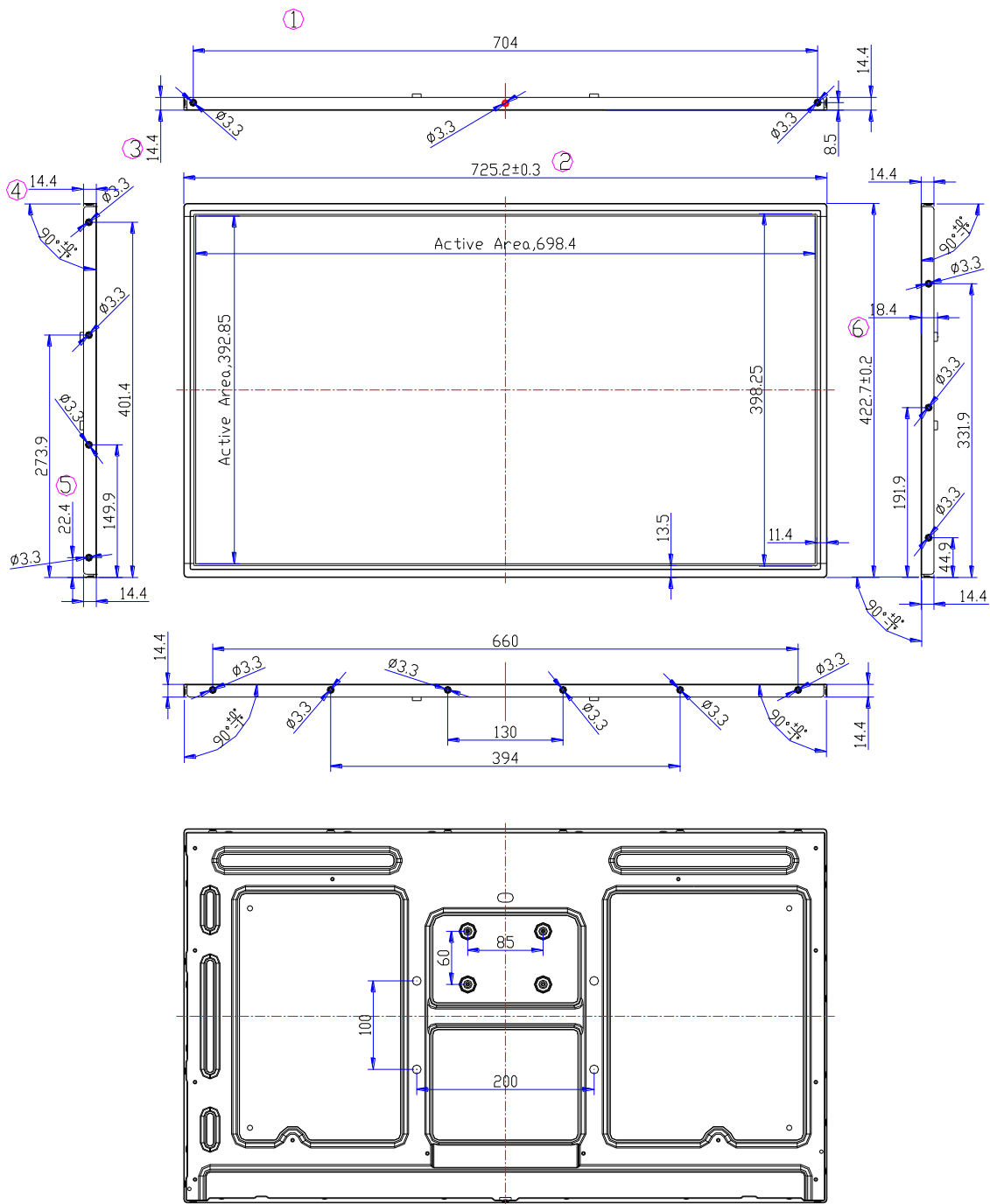
	Test Item	Q'ty	Condition
1	High temperature storage test	3	60°C,300hrs
2	Low temperature storage test	3	-20°C,300hrs
3	High temperature operation test	3	50°C,300hrs
4	Low temperature operation test	3	-5°C,300hrs
5	Drop test (With carton)	3	Height: 50cm 1 corner, 3 edges, 6 surfaces (ASTMD4169-I)

4. Package Specification



5. Mechanical Drawing

Unit :mm
Standard Tolerance : ±0.5



5. Mechanical Drawing

Unit :mm
Standard Tolerance : ±0.5

